

Time and light control  
Analogue time switches

Description

- 60 minute program
- 1 channel
- Without power reserve
- Synchronised with mains
- Tappets
- Shortest switching time: 75 seconds
- Switching preselection
- Switching status display
- 6 tappets included in delivery
- Analogue time switch



Technical data

|  | TM 179 h                                   |
|--|--|
| Operating voltage                                  | 230 V AC                                   |
| Frequency  | 50 Hz                                      |
| Number of channels                                 | 1  |
| Installation type                                  | Front panel installation/wall installation |
| Type of connection                                 | Screw terminals                            |
| Drive  | Synchronous motor                          |
| Program  | 60 minutes program                         |
| Switching capacity at 250 V AC, $\cos \varphi = 1$ | 10 A                                       |

|  | TM 179 h                             |
|--|--------------------------------------|
| Switching capacity at 250 V AC, $\cos \varphi = 0,6$ | 2 A                                  |
| Shortest switching times                             | 1.25 min                             |
| Programmable every                                   | 18.5 s                               |
| Time accuracy at 25 °C                               | Synchronised with mains              |
| Type of contact                                      | Changeover contact                   |
| Switching output                                     | Potential-free and phase-independent |
| Stand-by consumption                                 | 0.9 W                                |
| Test approval  | EMV                                  |

Subject to technical changes and misprints

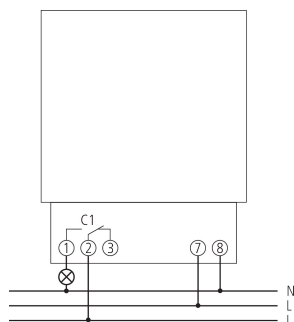
additional information at: [www.theben.de/product/1790008](http://www.theben.de/product/1790008)

The load data are determined with exemplary selected illuminants and are therefore typical data due to the large number of available products.

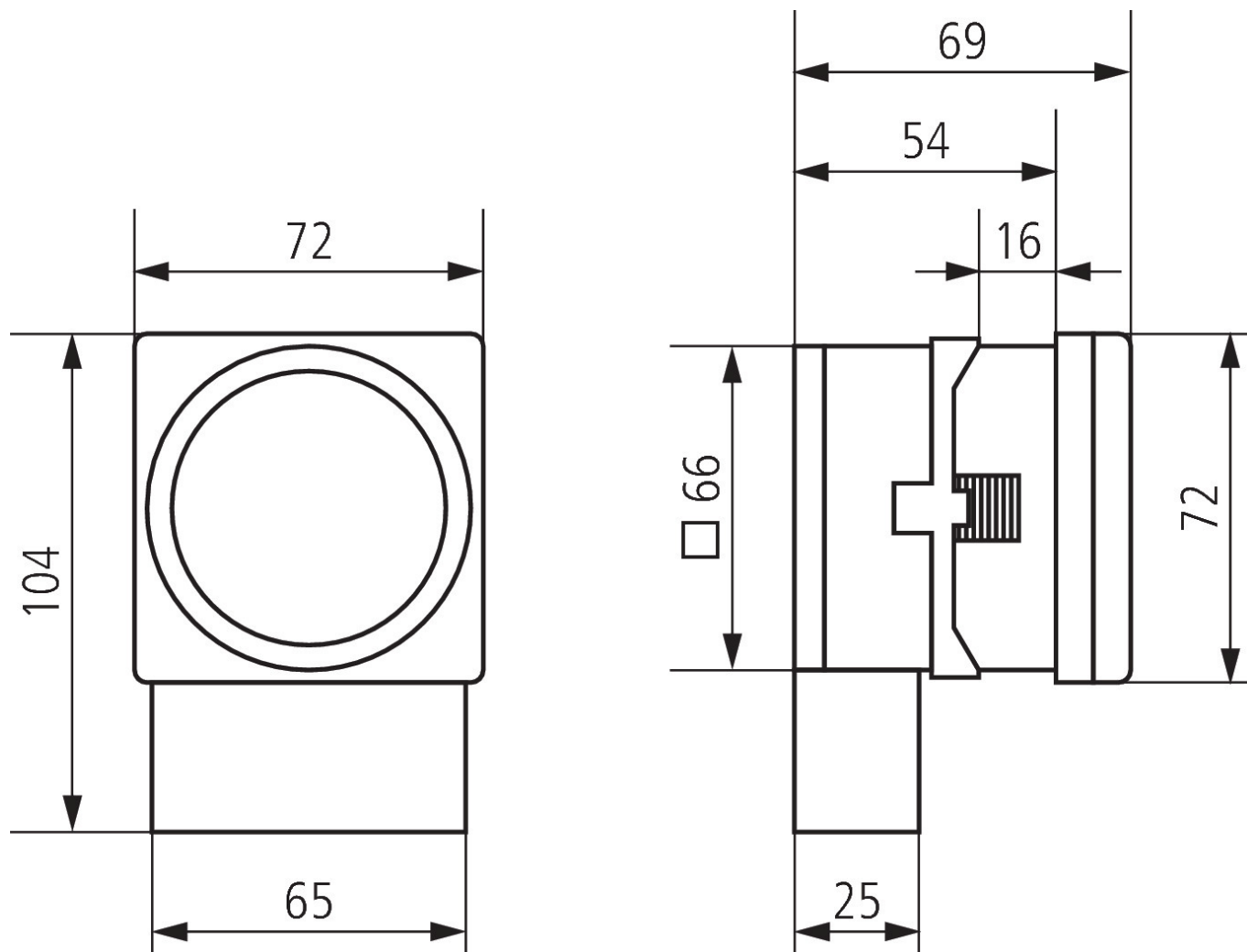
### Technical data

| TM 179 h                        |  | TM 179 h            |                             |
|---------------------------------|--|---------------------|-----------------------------|
| Housing and insulation material | High-temperature resistant, self-extinguishing thermoplastic | Protection class    | II according to EN 60 730-1 |
| Type of protection              | IP 20  | Ambient temperature | -10°C ... 55°C              |

### Connection example



Scale drawings



Accessories

Snap-on mounting 72 x 72  
Item no.: 9070071

