

EXIT LIGHT

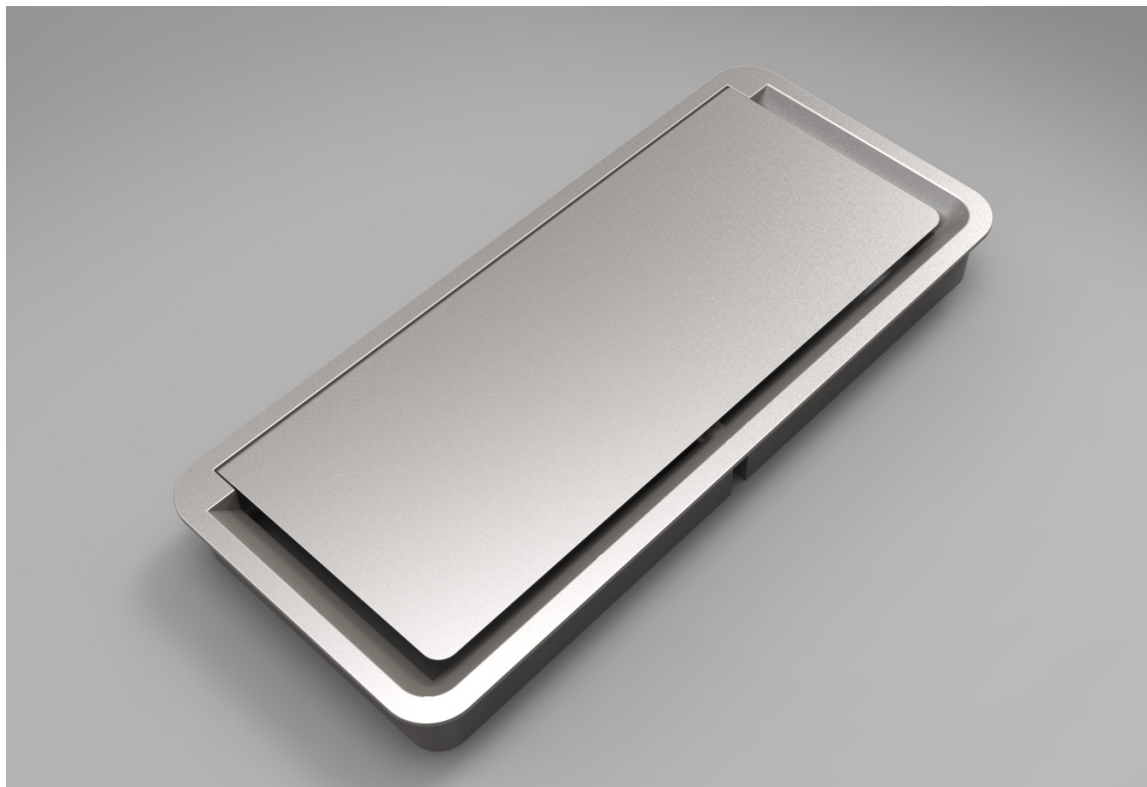
Passaggio cavi per piani scrivania |
Side by side access plate

SCHEDA TECNICA | DATA SHEET

ED.05_30.08.2023

EXIT LIGHT

Passaggio cavi per piani scrivania I
Side by side access plate



DATI COMMERCIALI | COMMERCIAL DATA

Codice prodotto Product code	040.26	Codice famiglia di prodotto - Valido per tutte le configurazioni Family product code - Valid for all configurations
---------------------------------	--------	--


DATI TECNICI | TECHNICAL DATA

MATERIALI | MATERIALS

Corpo Body	Tecnopolimero Technopolymer
---------------	--------------------------------

FINITURE | FINISHES

	Alluminio verniciato Painted aluminum
---	--

	Bianco RAL 9010 White RAL 9010
---	-----------------------------------

	Nero satinato Matt black
---	-----------------------------

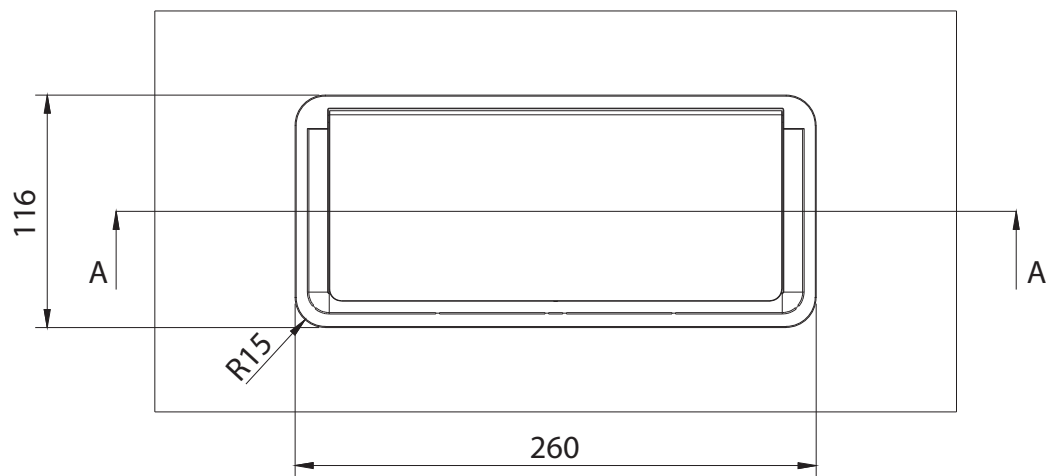


NOTE | NOTES

Tutte le dimensioni indicate sono nominali. I disegni e le immagini sono solo a scopo illustrativo.
I dettagli del prodotto e le dimensioni sono soggetti a modifiche senza preavviso.

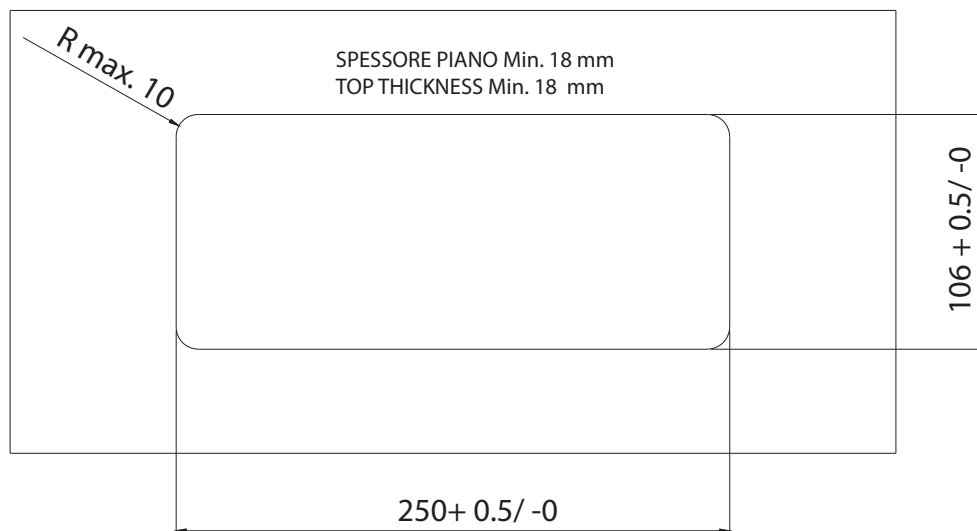
All dimensions quoted are nominal only. Drawings and images are for illustrative purposes only.
All product dimensions and specifications are subject to change without notice.

DIMENSIONI (mm) | DIMENSIONS (mm)




EXIT LIGHT

MISURE PIANO DI TAGLIO (mm)
CUT OUT DIMENSIONS (mm)



Asa Plastici srl
via Buonarroti, 58/60
20090 | Trezzano S/N (MI) | Italy
Tel/Phone +39 02 4455894 | Fax +39 02 4450107
web@asaplastici.it
asaplastici.com



EXIT LIGHT				
CODICE CODE	L 260 x 120 x 25 mm	alluminio verniciato painted aluminum	040.026.00001	
		bianco white	040.026.00002	
		nero satinato satin black	040.026.00003	
PREZZO PRICE				
NOTE NOTES				
DIM. L x H x W 770 x 280 x 260 mm	PESO WEIGHT 8,6 kg	PEZZI PER SCATOLA PCS PER BOX 50	MOQ 50 PZ / PCS	CODICE DOGANALE CUSTOM CODE 39269097

EXIT EDGE EXIT LIGHT